

# NATIONAL DISASTER RISK REDUCTION AND MANAGEMENT COUNCIL

National Disaster Risk Reduction and Management Center, Camp Gen. Emilio Aguinaldo, Quezon City, Philippines

## NDRRMC UPDATE

Severe Weather Bulletin No. **12 (FINAL)** re Typhoon "KATRING" (CHABA)

Releasing Officer:

*for* *Florentino R. Jover*  
**USEC BENITO T. RAMOS**  
 Executive Director, NDRRMC  
 and Administrator, OCD

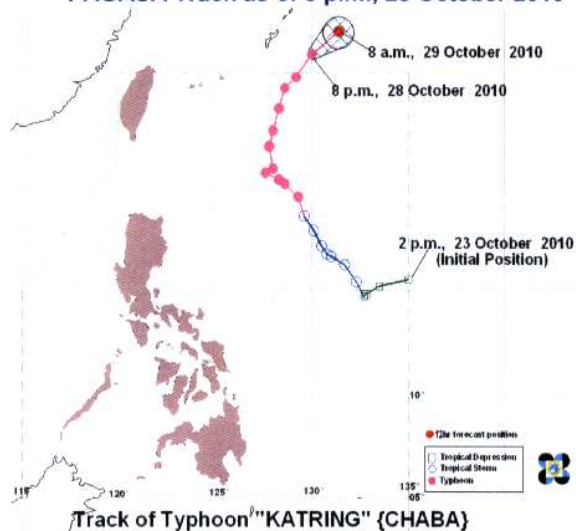
**DATE: 28 October 2010, 11:00 PM**

Source: PAGASA, PCG, RDRRMC2/OCDC2

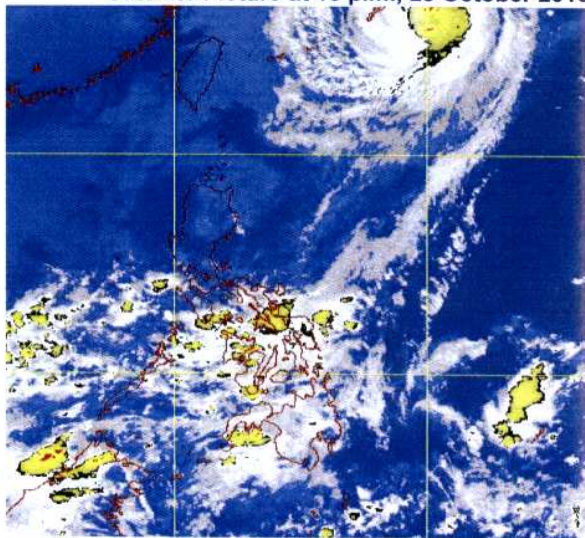
### I. Weather Update

Typhoon "KATRING" continues to move farther away from the country.

PAGASA Track as of 8 p.m., 28 October 2010



Satellite Picture at 10 p.m., 28 October 2010



<b>Location of Center:</b> (as of 10:00 PM)	970 km Northeast of Extreme Northern Luzon or 240 km East of Okinawa, Japan
<b>Coordinates:</b>	26.0°N, 130.3°E
<b>Strength:</b>	Maximum winds of 150 kph near the center and gustiness of up to 185 kph
<b>Movement:</b>	Northeast at 15 kph
<b>Forecast Positions/Outlook:</b>	<i>Friday morning:</i> 1,110 km Northeast of Extreme Northern Luzon or 350 km East Northeast of Okinawa, Japan

**No Public Storm Warning Signals Raised**

**With this development and unless re-entry occurs, this is the final bulletin for this weather disturbance.**

**However, residents along the coastal areas of Northern and Central Luzon and Eastern coast of Bicol Region are alerted against big waves.**

## **II. ACTIONS TAKEN:**

NDRRMC **Severe Weather Bulletin No. 12 (Final)** re Typhoon “KATRING” (CHABA) was disseminated to all OCD Regional Centers through SMS and facsimile; and uploaded into the NDRRMC website for further dissemination to their respective local disaster risk reduction and management councils (LDRRMCs) from the provincial down to the municipal levels.

Regional Disaster Risk Reduction and Management Councils (RDRRMCs) through the OCD Regional Centers were directed to undertake precautionary measures in their AOR. Likewise, the public and Disaster Risk Reduction and Management Councils (DRRMCs) were advised to take appropriate precautionary measures such as pre-emptive evacuation of families in low-lying areas and near mountain slopes as necessary.

---