

NATIONAL DISASTER RISK REDUCTION & MANAGEMENT COUNCIL

National Disaster Risk Reduction and Management Center, Camp Gen. Emilio Aguinaldo, Quezon City, Philippines

NDRRMC UPDATE

Severe Weather Bulletin No. **01** re Tropical Depression "KATRING"

Releasing Officer:

for *Priscilla P. Dugue*
USEC BENITO T. RAMOS
 Executive Director, NDRRMC
 and Administrator, OCD

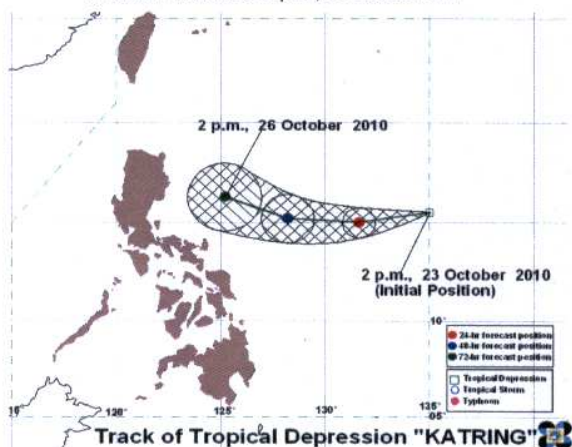
DATE: 23 October 2010, 05:00 PM

Source: PAGASA Weather Advisory No. 1 for Tropical Depression issued at 11:00AM, 23 October 2010

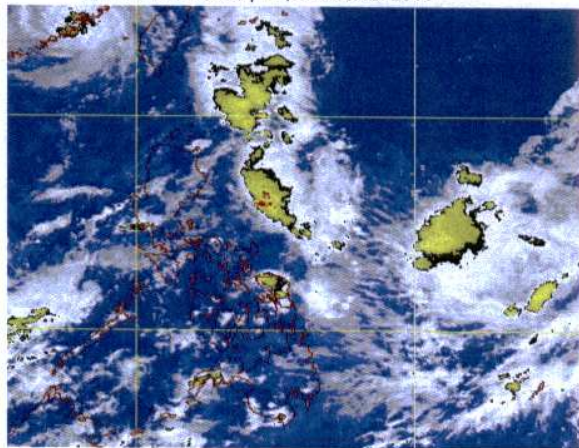
I. OVERVIEW:

- The Tropical Depression East of Luzon has entered the Philippine Area of Responsibility and was named "KATRING"

PAGASA Track as of 2 p.m., 23 October 2010



Satellite Picture at 5 p.m., 23 October 2010



The tropical depression East of Luzon has entered the Philippine Area of Responsibility (PAR) and was named "KATRING".

Location of Center: (as of 4:00 p.m.)	1,320 km East of Central Luzon
Coordinates:	15.4°N, 134.7°E
Strength:	Maximum winds of 55 kph near the center
Movement:	Forecast to move West Southwest at 15 kph.

Forecast Positions/Outlook:	<i>Sunday afternoon:</i> 1,000 km East of Central Luzon <i>Monday afternoon:</i> 600 km East of Central Luzon <i>Tuesday afternoon:</i> 280 km East of Northern Luzon
--	--

No Public Storm Warning Signals Raised

This weather disturbance is still far to affect any part of the country.

The public and the disaster coordinating councils concerned are advised to take appropriate actions and watch for the next bulletin alert to be issued at 11 P.M. today.

2. ACTIONS TAKEN:

NDRRMC **Severe Weather Bulletin No. 01 re Tropical Depression "KATRING"** was disseminated to all OCD Regional Centers through SMS and facsimile for further dissemination to their respective local disaster risk reduction and management councils from the provincial down to the municipal levels.

RDRRMCs through the OCD Regional Centers were directed to undertake precautionary measures in their AOR. Likewise, the public and Disaster Risk Reduction and Management Councils (DRRMCs) were advised to take appropriate precautionary measures such as pre-emptive evacuation of families in low-lying areas and near mountain slopes as necessary.