



REPUBLIC OF THE PHILIPPINES **NATIONAL DISASTER RISK REDUCTION AND MANAGEMENT COUNCIL**

National Disaster Risk Reduction and Management Center, Camp Aguinaldo, Quezon City, Philippines

NDRRMC UPDATE

Weather Bulletin No. 3 re Tropical Depression "LABUYO"

Releasing Officer:

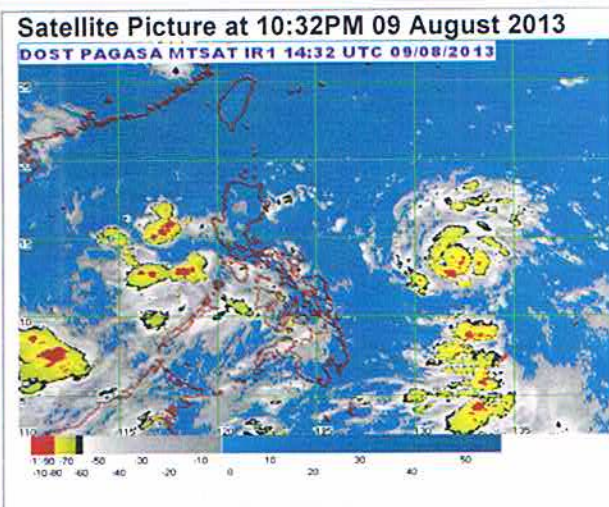
for: [Signature]
USEC EDUARDO D. DEL ROSARIO
 Executive Director

DATE : 09 August 2013, 11:00 PM

Source: PAGASA-DOST

I. SITUATION OVERVIEW:

Tropical Depression "LABUYO" has maintained its strength as it moves in a West Northwest direction



Location of Center: (as of 10:00 pm)	760 km East of Virac, Catanduanes
Coordinates:	(14.1°N, 132.3°E)
Strength:	Maximum winds of 55 kph near the center
Movement:	West Northwest at 19 kph
Forecast Positions/Outlook:	Tomorrow evening: 680 km East of Baler, Aurora Sunday evening: 290 km East of Tuguegarao City Monday evening: 110 km North of Laoag City
NO PUBLIC STORM WARNING SIGNAL RAISED	

- Estimated rainfall amount is from 5 - 10 mm per hour (moderate - heavy) within the 300 km diameter of the Tropical Depression.
- Tropical Depression "LABUYO" is too far to directly affect any part of the country. However, the Low Pressure Area (LPA) was estimated at 470 km Northwest of Puerto Princesa City (12.7°N, 115.4°E) which will bring scattered light to moderate rains and thunderstorms over MIMAROPA.
- The public and the disaster coordinating councils concerned are advised to take appropriate actions.

II. ACTION/S TAKEN

- NDRRMC Operations Center disseminated Weather Bulletin No. 3 on Tropical Depression "LABUYO" to all OCD Regional Centers through SMS and facsimile and uploaded on the NDRRMC website for further dissemination to their respective local disaster risk reduction and management councils (LDRRMCs) from the provincial down to the municipal levels
 - Directed RDRRMCs concerned through the OCD Regional Centers to undertake precautionary measures in their areas of responsibility (AOR) and subsequently advised local DRRMCs to initiate pre-emptive evacuation of families in low-lying and mountainous areas if situation warrants
-